

KEYNOTE AND FEATURED SPEAKERS

Saturday, November 8

9:30am – 10:15am

Keynote Address



Who's on First? Why a Constant Learning Process Is Essential for Science Museums

Michael Gartner, a graduate of Minnesota's Carleton College and New York University's School of Law, is chairman of Vision Iowa, a

\$225 million program created to help fund major attractions throughout the state. He is also principal owner of the Iowa Cubs baseball team. Gartner spent many years in journalism, serving as page-one editor of the *Wall Street Journal*, editor of the *Des Moines (Iowa) Register* and of Louisville, Kentucky's *Courier-Journal*, general news executive of Gannett Company and *USA Today*, and president of NBC News. In 1997, while editor and co-owner of the *Ames (Iowa) Tribune*, he won the Pulitzer Prize for editorial writing. He is currently a trustee of the Newseum, in Washington, D.C.

Sponsored by Clear Channel Exhibitions

Sunday, November 9

9:00am – 9:45am

Keynote Address



Bringing New Science into Our Museums

Catherine Verfaillie, who received her medical degree from Belgium's University of Leuven, is professor of medicine at the University of Minnesota (UM) and director of

UM's Stem Cell Research Institute. A widely published author and member of numerous international societies, Verfaillie holds three endowed university chairs in stem cell biology, genetics, and genomics. Her current research focuses on the isolation and differentiation of adult stem cells found in brain, bone marrow, and muscle tissues, and their possible use in treating diseases and disorders of the muscular, vascular, neurological, and other body systems. Dr. Verfaillie was named one of the top 10 innovators for 2001 by *U.S. News & World Report*.

Featured speakers in individual conference sessions will include:

Saturday, November 8

12:30am – 1:45pm



Born to Sing: Music, Learning, and the Human Mind

Donald A. Hodges is Covington Distinguished Professor of Music Education at the University of North Carolina at Greensboro. A contributing editor of the *Handbook of Music Psychology*, he is widely published in the areas of music education, perception, and cognition. Dr. Hodges is also chair-elect of the Music Perception and Cognition Special Research Interest Group of the Music Educators National Conference. His recent research includes brain imaging studies of musicians and work on Williams Syndrome musicians and tonality judgments of popular music among preteens.

Sponsored by National Musical Arts

Saturday, November 8

2:15pm – 3:30pm



What Research Says About Girls and Technology

Cornelia Brunner is Associate Director of EDC's Center for Children and Technology, New York, New York. For more than 30 years, Dr. Brunner has been involved in the research,

production, and teaching of educational technology in science, social studies, media literacy, and the arts. She has taught experimental courses at Bank Street College and the Media Workshop New York, worked extensively with staff and students in a variety of school environments, and served as an industry consultant for the design of educational and entertainment products for children of all ages.

Keynote and Featured Speakers

Saturday, November 8

2:15pm – 3:30pm



A Photographic Journey with Jim Brandenburg

Photographer **Jim Brandenburg** has traveled for two decades on assignment for *National Geographic*, most recently for that magazine's June 2003 feature "Boundary

Waters." His photographs have won numerous national and international awards, and he has twice been named Magazine Photographer of the Year by the (U.S.) National Press Photographers Association. A native Minnesotan, Brandenburg, who received the United Nations' World Achievement Award for his use of nature photography to raise environmental awareness, has dedicated himself to helping restore the Northern Tallgrass Prairie of southwestern Minnesota. All profits from one of his two galleries in the state go toward the work of the Brandenburg Prairie Foundation.

Saturday, November 8

2:15pm – 3:30pm



Discovering Soundscapes

For more than 25 years, bioacoustics expert **Bernie Krause** has collected ambient and species-specific sounds in environments as diverse as Glacier Bay, Alaska, and Tanzania's Gombe Park. A noted musician in his own right (he was a member of the 1960s

folk group The Weavers and later helped to establish the synthesizer as a musical instrument), Krause has made a career out of blending natural sounds with orchestration to produce unique environmental music. His Glen Ellen, California company, Wild Sanctuary Inc., continues to make albums for clients like the Nature Company while also developing, through its automated Intelligent Sound System, nonredundant audio recreations of the natural environment for use in public spaces like zoos, museums, and aquariums.

Sponsored by National Musical Arts

Saturday, November 8

4:00pm – 5:15pm



Engineering Change: Critical Roles for Science Centers in Achieving Technology Literacy

Ioannis Miaoulis is President and Director of the Museum of Science, Boston. Prior to joining the museum in January 2003, he served as Dean

of the School of Engineering and Associate Provost at Tufts University, in Medford, Massachusetts. During his tenure at Tufts, Dr. Miaoulis significantly increased the number of women students and faculty in the School of Engineering and more than doubled the number of research initiatives. He has also been active in education at the elementary and secondary levels, championing the inclusion of engineering in the public school curriculum. He currently serves as Chair of the Massachusetts Technology/Engineering Advisory Board.

Sunday, November 9

Noon – 1:15pm



Increasing Major Giving in Your Fund-Raising Program

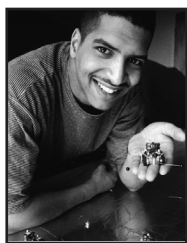
Reid A. Zimmerman, CFRE, is Vice President of Development for the Hazelden Foundation, Center City, Minnesota. His background includes 12 years as a Lutheran pastor

and more than 20 years in the nonprofit sector as a consultant in organizational development, strategic planning, and fund-raising. An adjunct faculty member at St. Thomas University and a listed organizational facilitator with the Drucker Foundation, Zimmerman is currently pursuing a Ph.D. in organizational development, change, and effectiveness through the Union Institute and University, Cincinnati, Ohio.

Keynote and Featured Speakers

Sunday, November 9

1:30pm – 2:45pm



The Invention Equation

As an undergraduate working in the MIT Artificial Intelligence Lab, in Cambridge, Massachusetts, **James McLurkin** invented the world's smallest self-contained, autonomous robots—modeling

the actions and interactions of his cubic-inch-square “ants” on those of a colony of real-world ants that he kept on his desk. (The story of this project is featured in the Smithsonian traveling exhibition *Invention at Play*.) In February 2003, McLurkin, now a doctoral candidate in Computer Science at MIT, was awarded the ninth annual \$30,000 Lemelson-MIT Student Prize for his pioneering work in microrobotics. He is currently developing larger “swarm” robots that can travel and perform functions in fleets.

Sponsored by the Lemelson Center for the Study of Invention and Innovation, National Museum of American History, Smithsonian Institution

Sunday, November 9

3:15pm – 4:30pm



Is There Life on Mars? Follow the Water!

Matthew P. Golombek, Project Scientist for NASA's Mars Pathfinder Project, has served as the prime interface between the project, the science community, and NASA

Headquarters. Responsible for the overall science content of the mission, he chairs the Mars Pathfinder Project Science Group (a team of some 70 mission scientists), serves as deputy of the Experiment Operations team, and helps to provide input for budget and management decisions. Dr. Golombek is based at the Jet Propulsion Laboratory in Pasadena, California, where he conducts research in Earth and planetary structural geology and tectonics.

Sponsored by the National Aeronautics & Space Administration

Monday, November 10

9:00am – 10:15pm



Engaging the Public with Science: A Dialogue

Alan I. Leshner is Chief Executive Officer of the American Association for the Advancement of Science, Washington, D.C., and Executive Publisher of the AAAS journal, *Science*.

Formerly director of the (U.S.) National Institute on Drug Abuse at the National Institutes of Health, Dr. Leshner is credited with helping to clarify to the public the health aspects of addiction and its biological bases. At AAAS, his focus is on advancing the role of science in society, from investigating the promise of therapeutic cloning technologies to critiquing health-care reform to examining the role of national security versus international academic freedom.

Monday, November 10

9:00am – 10:15pm



Children and the Physiology of Stress

Distinguished McKnight University Professor **Megan R. Gunnar**, of the University of Minnesota, Minneapolis, is a faculty member at UM's Institute for Child Development, one of the

oldest U.S. research centers in the field. She also holds a three-year appointment as Rodney Wallace Professor for the Advancement of Teaching and Learning. Dr. Gunnar's research has focused on the effects of early deprivation on children's social and emotional development. She served on the National Academy of Science panel that produced the report *From Neurons to Neighborhoods* (2000), and is a member of the board of Zero to Three, the National Center for Infants, Toddlers, and Families, in Washington, D.C.

Sponsored by the American Psychological Association

Keynote and Featured Speakers

Monday, November 10

10:30am – noon



DNA: What's Hot, and What's Not

As Associate Director of the Division of Extramural Research at the National Human Genome Research Institute (NHGRI), Bethesda, Maryland, **Jane Peterson** directs NHGRI's program in comparative sequencing and administers and evaluates cooperative agreements with large-scale DNA sequencing centers. In 2001, Dr. Peterson received the Secretary's Award from the Department of Health and Human Services for her contributions to the Human Genome Project.

Monday, November 10

10:45am – noon



The Diversity Endowment Funds: Connecting with Communities and Emerging Markets

As Development Officer of the Saint Paul Foundation's Diversity Endowment Funds, **Norman W. Harrington Jr.** is responsible for the development and marketing of five funds that together have awarded more than \$2.5 million to community organizations in Minnesota. His background includes more than 20 years' experience in strategic planning, financial management, marketing, and capital acquisition. He has conducted seminars and workshops on a variety of business topics and is currently an instructor at the University of St. Thomas Center for Non-Profits.

pencils • shirts • calendars • magnets • pens • hats • mugs

bags • portfolio • tools • stuffed animals • food gifts • clocks



Clever Promotions, Inc.
Bright Ideas For Your Company!

Marketing Products
Personalized Giftstore Items
Volunteer Gifts
Fund Raising
Membership Incentives
Education Promotions

Call for a **FREE** package of sample ideas!
800-311-5394
www.cleverpromotions.com
Located in the Poway Business Park

golf items • balls • flyers • jackets • candy jars • blankets

keychains • executive toys • flashlights • mousepads