

# DESIGNING FOR ACTION

Developing Exhibits that Motivate Visitors to  
Adopt Sustainable Practices in Their Lives

2019 ASTC Annual Conference





Luxembourg Science Center, Luxembourg



Muzeiko Children's Museum, Bulgaria



# SKOLNICK

ARCHITECTURE + DESIGN PARTNERSHIP

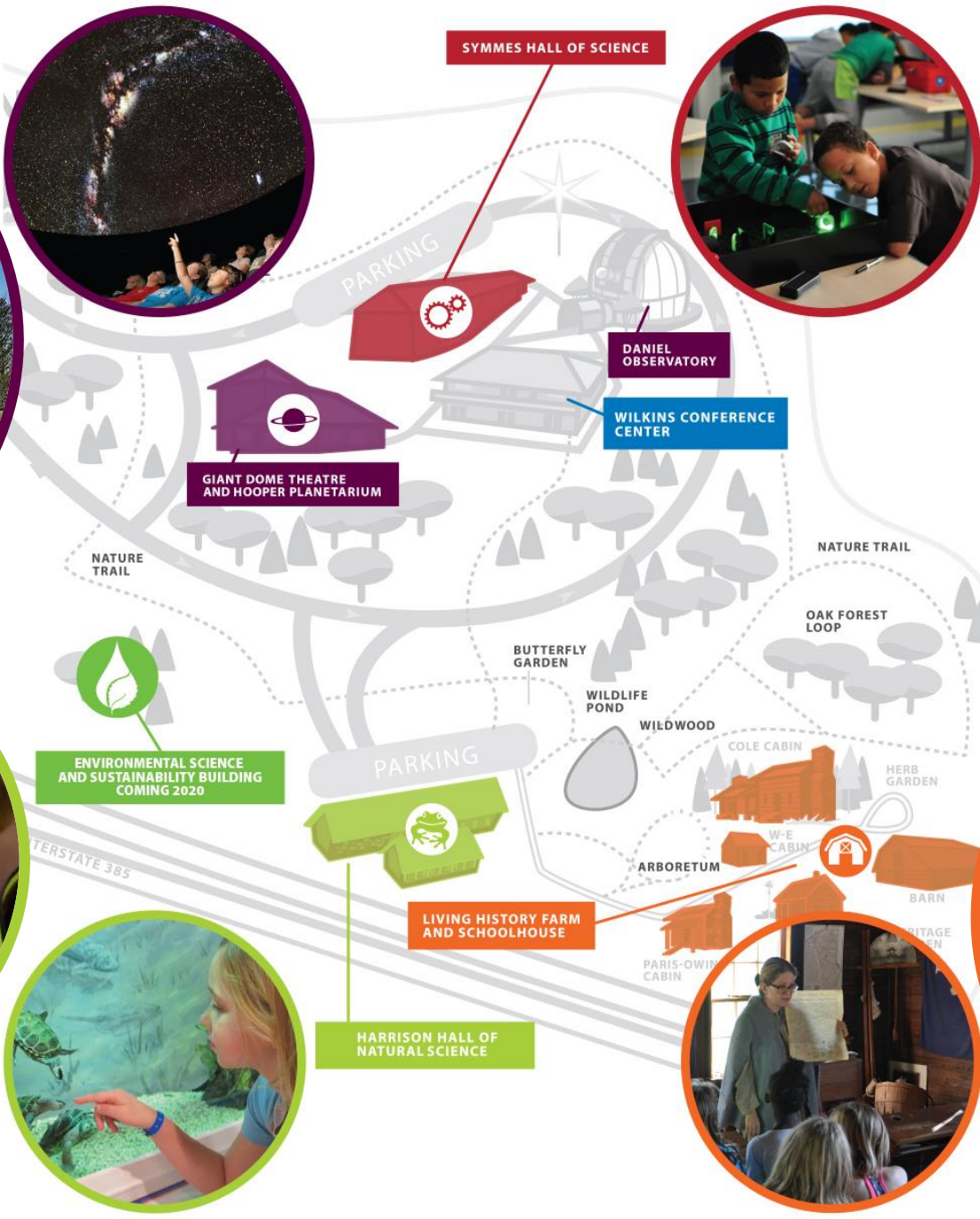


Children's Gallery, Royal Alberta Museum, Canada



Discovery Zone, Florida Museum of Natural History





# Roper Mountain Science Center





# Roper Mountain Science Center

## Environmental Science and Sustainability Center





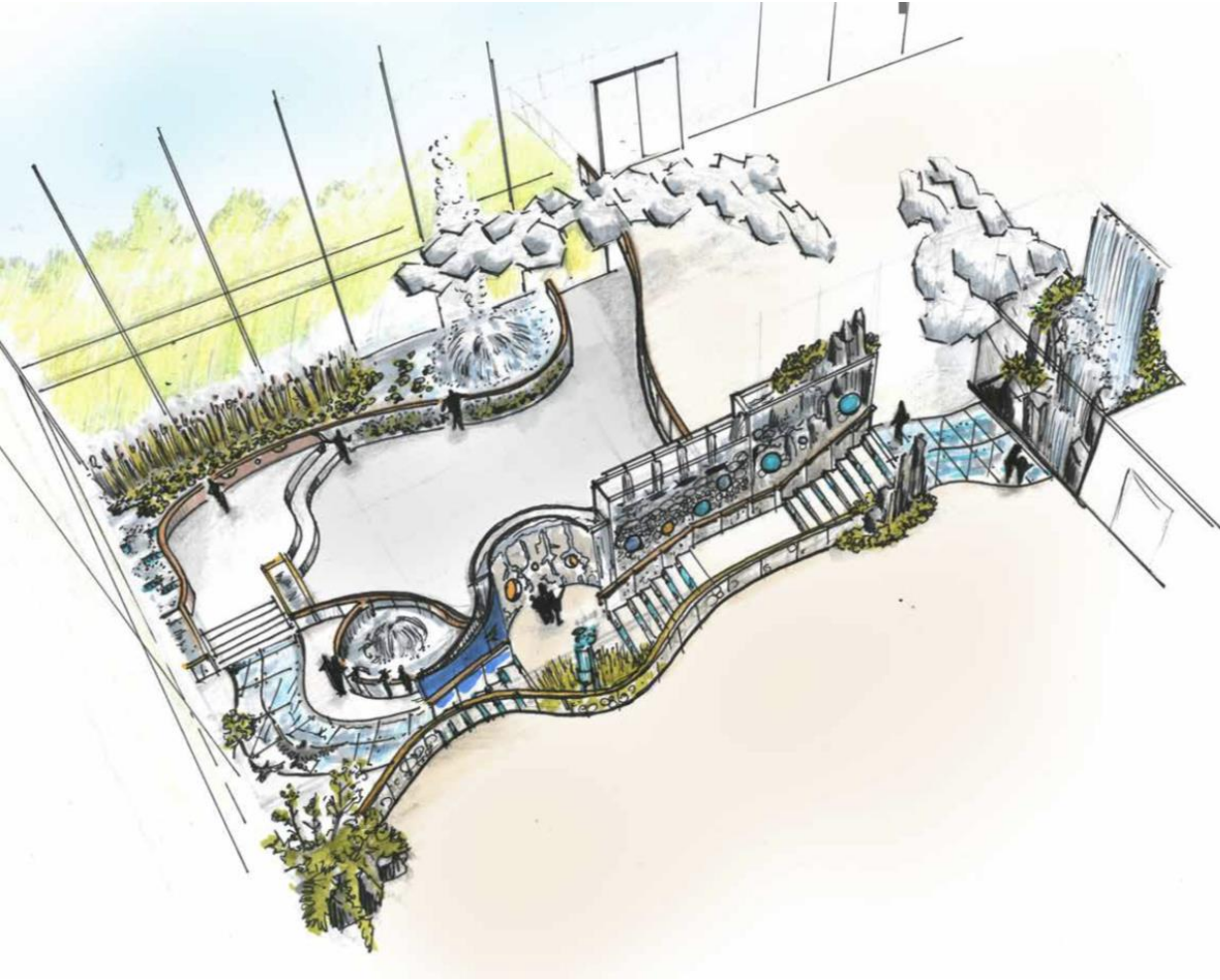
An aerial photograph of a large, winding lake nestled within a dense forest of green trees. The lake's surface is a calm, light blue-grey color, reflecting the overcast sky. The surrounding land is covered in thick, dark green foliage. In the background, rolling mountains are visible, with white clouds filling the valleys and clinging to the lower slopes, creating a misty atmosphere. The overall scene is serene and majestic.

**EVOKE AWE**



# RMSC Environmental Science and Sustainability Center

## Immersive Greenville Watershed





A group of four young adults (three women and one man) are smiling and standing behind a recycling station. The station has four bins: RECYCLE (blue), COMPOST (green), LIQUIDS (grey), and LANDFILL (black). The woman on the far left is holding a piece of cardboard. The woman next to her is dropping a banana peel into the COMPOST bin. The woman next to her is pouring a liquid from a bottle into the LIQUIDS bin. The man on the far right is holding a clear plastic bag. The background shows a large window with a view of a city building.

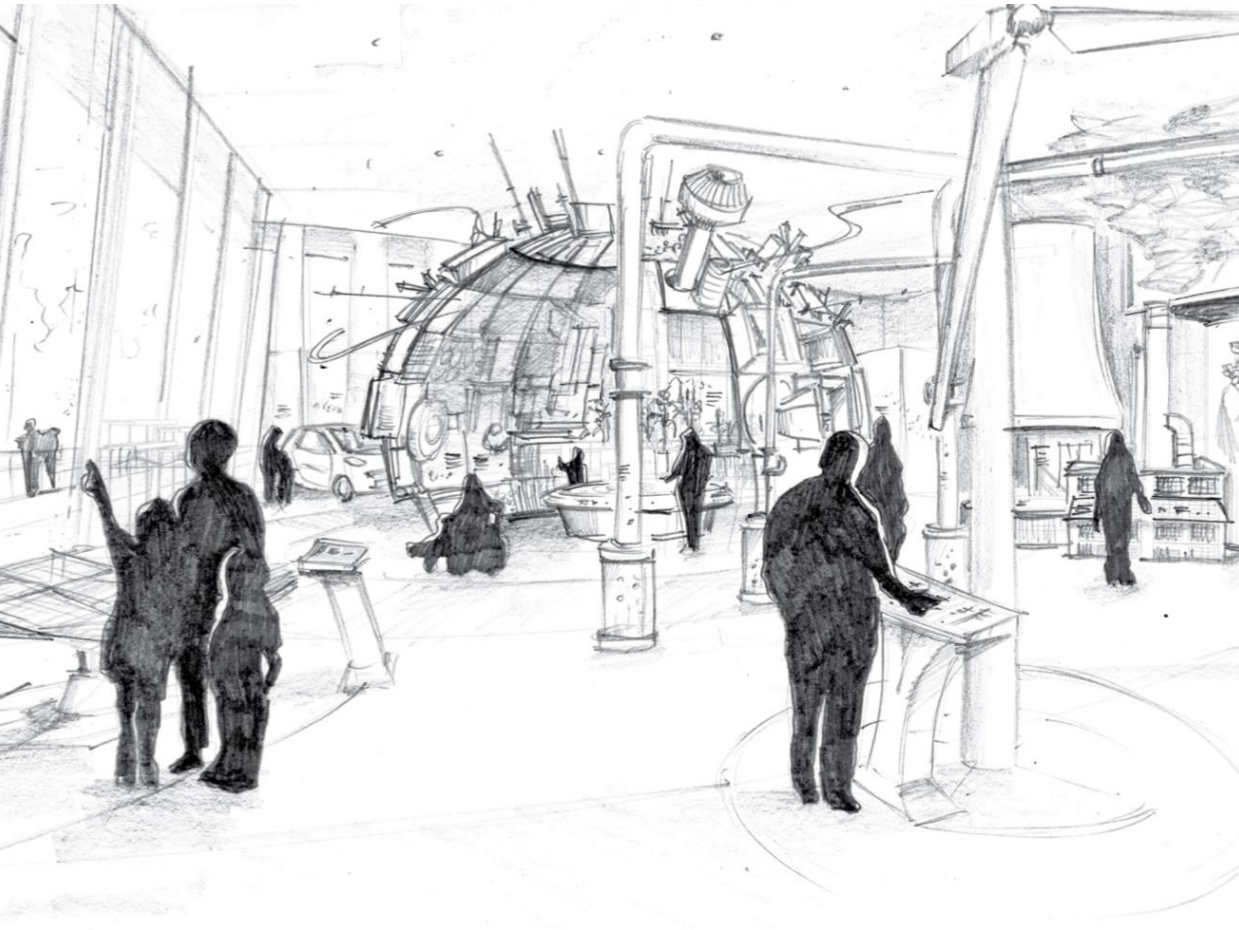
**BE RELATABLE & PRACTICAL**





# RMSC Environmental Science and Sustainability Center

## Daily Life Stations: Waste, Food, Water, Energy, Clothing





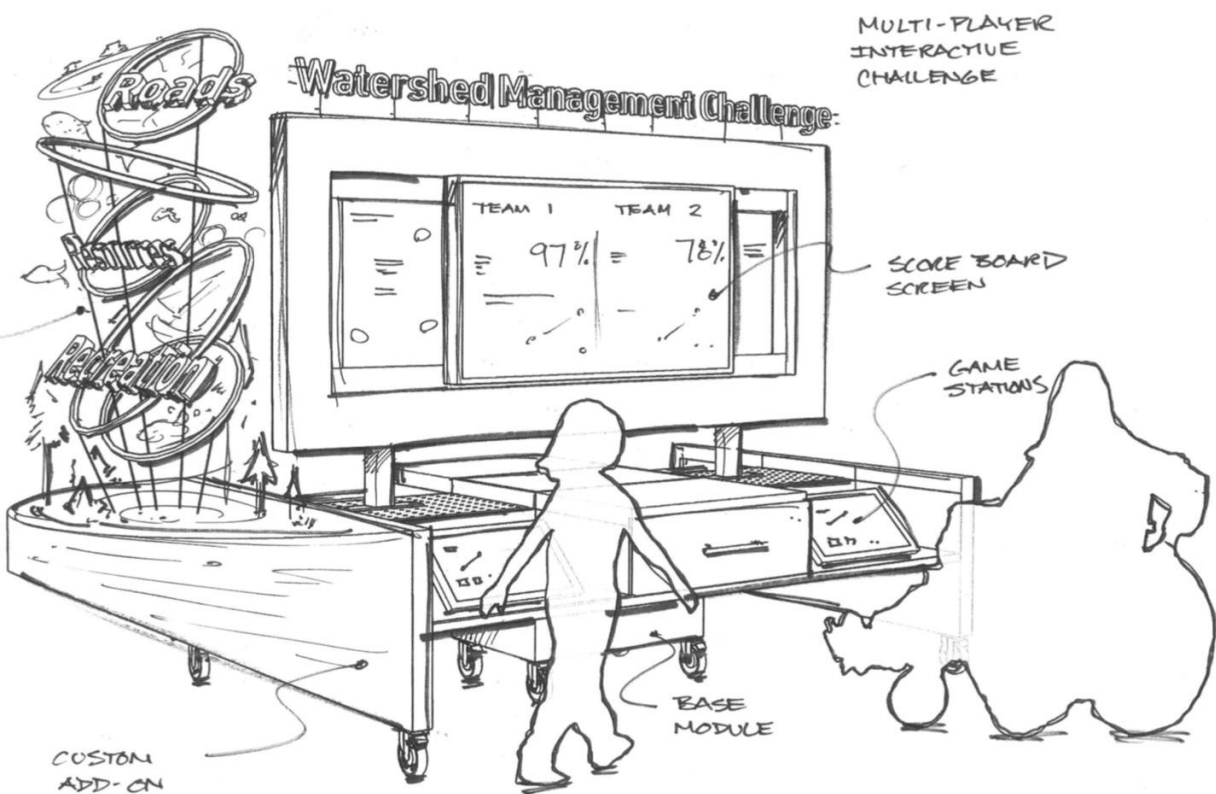
A photograph of a metal storm drain grate set into a concrete sidewalk. The grate is made of dark, weathered metal with a grid of rectangular openings. It is heavily clogged with debris. A large, crumpled piece of white plastic or paper is stuck in the upper right section. Other smaller pieces of trash, including a piece of brown paper and some dried leaves, are caught in the lower part of the grate. The surrounding concrete is grey and shows some signs of wear and small puddles of water.

**DISPLAY CONSEQUENCES**



# RMSC Environmental Science and Sustainability Center

## Mountains to Sea / Stormwater Pinball Kiosks







## SHOWCASE PUBLIC COMMITMENT



# RMSC Environmental Science and Sustainability Center

## Community Pledge Wall





# Q&A

Katie Ahern

Senior Interpretive Specialist, SKOLNICK Architecture + Design

[kahern@skolnick.com](mailto:kahern@skolnick.com)

